

## Features

- CRITEC® Transient Discriminating (TD) Technology provides increased service life
- Modular design allows individual modes to be field replaceable; built-in disconnect and fusing eliminates need for external fusing
- Built-in safety features include TD Technology, thermal protection and short circuit current cartridge fusing
- Compact NEMA®-4 enclosure design can be flush mounted or installed in a small space
- Status indication flag per mode, voltage presence LEDs, audible alarm and voltage-free contacts provide remote status monitoring
- 100kA 8/20 maximum surge rating provides protection suitable for smaller main-distribution panels and an extended operational life
- Available in various operating voltages to suit most common power distribution systems
- CE, UL® pending



The TDX100M Modular Series of Transient Voltage Surge Suppressors is designed for critical protection applications. The 100kA 8/20µs of surge protection exceeds the IEEE® C62.41.2 Scenario II single-shot surge rating requirements for exposed service entrance locations – Exposure 3.

The NEMA®-4 weather tight housing allows the TDX to be installed on indoor or outdoor service panels. The preconfigured connecting leads simplify installation. The unique narrow construction allows the SPD to fit between adjacent panel boards and connect via a 90-degree elbow. A flush mounting kit is also available for installing the SPD in drywall applications.



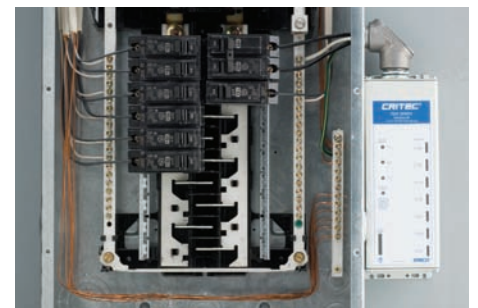
*TDX output contacts.*



*TDX Replaceable Modules.*



*TDX Replaceable Cartridge overcurrent fuse protection.*



*Typical installation.*



Model	TDX100M 120/240	TDX100M 120/208	TDX100M 120/240D	TDX100M 277/480	TDX100M 277/480TT	TDX100M 347/600	TDX100M 240D	TDX100M 480D
Nominal Voltage U <sub>n</sub> (pole)	120/240V~	120/240V~	120/240V~	277/480V~	277/480V~	347/600V~	240V~	480V~
Distribution System <sup>(1)</sup>	1Ph 3W+G	3Ph 4W+G	3Ph Δ 4W+G	3Ph 4W+G (&3W+G <sup>(2)</sup> )	3Ph 4W+G	3Ph 4W+G	3Ph Δ 3W+G	3Ph Δ 3W+G
MCOV U <sub>c</sub>	170/340V~	170/295V~	170/340V~	310/536V~	310/536V~	560/970V ~	275V ~	560V ~
Stand off Voltage	240/480V~	240/415V~	240/415V~	480/813V~	480/813V~	790/1370V ~	415V ~	790V ~
Frequency	50 / 60Hz							
Short Circuit Current Rating	200kAIC (Isc)							
Technology Used	TD Technology with thermal disconnect Over-current Replaceable Cartridge Fusing							
<b>Protection</b>								
Maximum Discharge Current (I <sub>max</sub> /per line)	100kA 8/20μs							
Nominal Discharge Current (I <sub>n</sub> /per line)	40kA 8/20μs			40kA 8/20μs				
Protection Modes	L-N, L-G & N-G				L-N, N-G	L-N, L-G & N-G	L-L, L-G	
Protection Level (L-N) Up @ 3kA	< 450V			< 800V				
Protection Level (L-N) Up @ In	< 1.1kV			< 1.2kV				
<b>Alarms and Indicators</b>								
Status Indication	LED status indication per phase, mechanical flag per mode, all modes monitored Remote contacts, change-over, 400V~ / 3A, max 1.5 mm <sup>2</sup> (#14AWG) terminals Audible Alarm Optional Surge Counter (insert "S" in order code as follows, example TDX100MS277/480)							
<b>Physical Data</b>								
Dimensions	240 mm x 84 mm x 72 mm 9.5" x 3.25" x 2.875"							
Weight	1.4 kg (3.1 lbs) approx.							
Enclosure	Aluminum, IP 65 (NEMA <sup>®</sup> -4)							
Connection	Line: 600 mm of 5.26 mm <sup>2</sup> (24" of # 10 AWG) flying leads Neutral/ Ground: 900 mm of 5.26 mm <sup>2</sup> (36" of # 10 AWG) flying leads							
Mounting	3/4" straight nipple Optional flush mounting plate for drywall							
Temperature	-40°C to +80°C (-40°F to +176°F)							
Humidity	0 to 90%							
<b>Test Standards</b>								
Approvals	CE, IEC <sup>SM</sup> 61643-1, UL <sup>®</sup> 1449 Pending, C-Tick							
Surge Rated to Meet	IEC 61643-1 Class II, ANSI <sup>®</sup> /IEEE <sup>®</sup> C62.41-1991 Cat A, Cat B, Cat C ANSI/IEEE C62.41.2 Scenario II, Exposure 3, 100kA 8/20μs, 10kA 10/350μs							
Available Options	Flush Mount Kit (Order TDXM100FP) Side Mount Kit (Order TDXM100SM) Replacement Surge Module (Order TDS150150M or TDS150240M or TDS150277M or TDS150560M) (please refer to installation instructions for the correct replacement surge module order code) Replacement Fuse Cartridge (Order TDXFUSE)							

(1) Grounded systems only. 240D and 480D should not be used on high-leg or ungrounded systems.

(2) TDX100M277/480 can be used on "No Neutral" 480V Wye 3W+G systems.

Due to a policy of continual product development, specifications are subject to change without notice.

**WARNING**

ERICO products shall be installed and used only as indicated in ERICO's product instruction sheets and training materials. Instruction sheets are available at [www.erico.com](http://www.erico.com) and from your ERICO customer service representative. Improper installation, misuse, misapplication or other failure to completely follow ERICO's instructions and warnings may cause product malfunction, property damage, serious bodily injury and death.

ANSI is a registered trademark of the American National Standards Institute.  
IEC is a registered service mark of Independent Electrical Contractors, Inc.  
IEEE is a registered trademark of the Institute of Electrical and Electronics Engineers, Incorporated.  
NEMA is a registered trademark of National Electrical Manufacturers Association.  
UL is a registered trademark of The Underwriters Laboratories, Inc.

Copyright ©2006 ERICO International Corporation. All rights reserved.  
CADDY, CADWELD, CRITEC, ERICO, ERITECH, ERIFLEX, and LENTON are registered trademarks of ERICO International Corporation.

## Features

- CRITEC® Transient Discriminating (TD) Technology provides increased service life
- Modular design allows individual modes to be field replaceable; built-in disconnect and fusing eliminates need for external fusing
- Built-in safety features include TD Technology, thermal protection and short circuit current cartridge fusing
- Compact NEMA®-4 enclosure design can be flush mounted or installed in a small space
- Status indication flag per mode, voltage presence LED's, audible alarm and voltage-free contacts provides remote status monitoring
- 200kA 8/20 maximum surge rating provides protection suitable for service entrance, main-distribution panels and highly exposed applications
- Available in various operating voltages to suit most common power distribution systems
- CE, UL® pending



The TDX200 Series of Transient Voltage Surge Suppressors is designed for critical protection applications. The 200kA 8/20µs of surge protection exceeds the IEEE® C62.41.2 Scenario II single-shot surge rating requirements for exposed service entrance locations – Exposure 3.

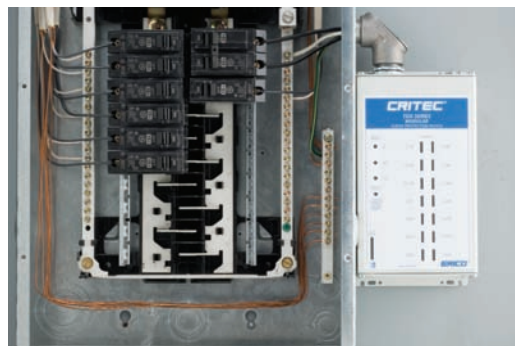
The NEMA®-4 weather-tight housing allows the TDX to be installed on indoor or outdoor service panels. The preconfigured connecting leads simplify installation. The unique narrow construction allows the SPD to fit between adjacent panel boards and connect via a 90-degree elbow. A flush mounting kit is also available for installing the SPD in drywall applications.



*TDX Replaceable Modules.*



*TDX Replaceable Module backplane fully removed.*



*Typical installation.*



Model	TDX200M 120/240	TDX200M 120/208	TDX200M 120/240D	TDX200M 277/480	TDX200M 277/480TT	TDX200M 347/600	TDX200M 240D	TDX200M 480D
Nominal Voltage U <sub>n</sub> (pole)	120/240V~	120/240V~	120/240V~	277/480V~	277/480V~	347/600V~	240V~	480V~
Distribution System <sup>(1)</sup>	1Ph 3W+G	3Ph 4W+G	3Ph Δ 4W+G	3Ph 4W+G (8/3W+G <sup>(2)</sup> )	3Ph 4W+G	3Ph 4W+G	3Ph Δ 3W+G	3Ph Δ 3W+G
MCOV Uc	170/340V~	170/295V~	170/340V~	310/536V~	310/536V~	560/970V ~	275V ~	560V ~
Stand off Voltage	240/480V~	240/415V~	240/415V~	480/813V~	480/813V~	790/1370V ~	415V ~	790V ~
Frequency	50 / 60Hz							
Short Circuit Current Rating	200kAIC (Isc)							
Technology Used	TD Technology with thermal disconnect Over-current Replaceable Cartridge Fusing							
<b>Protection</b>								
Maximum Discharge Current (I <sub>max</sub> /per line)	200kA 8/20μs							
Nominal Discharge Current (I <sub>n</sub> /per line)	80kA 8/20μs				80kA 8/20μs			
Protection Modes	L-N, L-G & N-G				L-N, N-G	L-N, L-G & N-G	L-L, L-G	
Protection Level (L-N) Up @ 3kA	< 450V			< 800V				
Protection Level (L-N) Up @ In	< 1.1kV			< 1.2kV				
<b>Alarms and Indicators</b>								
Status Indication	LED status indication per phase, mechanical flag per mode, all modes monitored Remote contacts, change-over, 400V~ / 3A, max 1.5 mm <sup>2</sup> (#14AWG) terminals Audible Alarm Optional Surge Counter (insert "S" in order code as follows, example TDX200MS277/480)							
<b>Physical Data</b>								
Dimensions	240 mm x 130 mm x 72 mm    9.5" x 5.125" x 2.875"							
Weight	2 kg (4.4 lbs) approx.							
Enclosure	Aluminum, IP 65 (NEMA®-4)							
Connection	Line: 600 mm of 5.26 mm <sup>2</sup> (24" of # 10 AWG) flying leads Neutral/ Ground: 900 mm of 5.26 mm <sup>2</sup> (36" of # 10 AWG) flying leads							
Mounting	3/4" straight nipple Optional flush mounting plate for drywall							
Temperature	-40°C to +80°C (-40°F to +176°F)							
Humidity	0 to 90%							
<b>Test Standards</b>								
Approvals	CE, IEC <sup>SM</sup> 61643-1, UL® 1449 Pending, C-Tick							
Surge Rated to Meet	IEC 61643-1 Class II, ANSI®/IEEE® C62.41-1991 Cat A, Cat B, Cat C ANSI/IEEE C62.41.2 Scenario II, Exposure 3, 100kA 8/20μs, 10kA 10/350μs							
Available Options	Flush Mount Kit (Order TDXM200FP) Side Mount Kit (Order TDXM200SM) Replacement Surge Module (Order TDS150150M or TDS150240M or TDS150277M or TDS150560M) (please refer to installation instructions for the correct replacement surge module order code) Replacement Fuse Cartridge (Order TDXFUSE)							

(1) Grounded systems only. 240D and 480D should not be used on high-leg or ungrounded systems.

(2) TDX200M277/480 can be used on "No Neutral" 480V Wye 3W+G systems.

Due to a policy of continual product development, specifications are subject to change without notice.

**WARNING**

ERICO products shall be installed and used only as indicated in ERICO's product instruction sheets and training materials. Instruction sheets are available at [www.erico.com](http://www.erico.com) and from your ERICO customer service representative. Improper installation, misuse, misapplication or other failure to completely follow ERICO's instructions and warnings may cause product malfunction, property damage, serious bodily injury and death.

ANSI is a registered trademark of the American National Standards Institute.  
IEC is a registered service mark of Independent Electrical Contractors, Inc.  
IEEE is a registered trademark of the Institute of Electrical and Electronics Engineers, Incorporated.  
NEMA is a registered trademark of National Electrical Manufacturers Association.  
UL is a registered trademark of The Underwriters Laboratories, Inc.

Copyright ©2006 ERICO International Corporation. All rights reserved.  
CADDY, CADWELD, CRITEC, ERICO, ERITECH, ERIFLEX, and LENTON are registered trademarks of ERICO International Corporation.